

PAPS - JUST DO IT!

"I WISH I HAD EXAMINED HER AND DONE HER PAP."

Perhaps a rare thought for a physician?

Kate's doctor may have had that exact sentiment after she was diagnosed with cervical cancer at 27 years old. Inoperable cervical cancer, which resulted in transposition of her ovaries, radiation and chemotherapy, and the heartbreaking reality of never having children, not to mention the inevitable severe mental health repercussions, from which she will never recover.

All this could have been prevented by a simple pap test.

So, this begs the question: why don't more primary care practitioners do routine cervical screening pap smears? Before the COVID pandemic, only 60% of eligible people with a cervix were appropriately screened for cervical cancer in our region. Since the pandemic, the numbers are much lower.

Prevention is the key! Do you think twice about ordering a mammogram, or a FIT test/colonoscopy. No... and why? Because it only involves signing your name on a piece of paper and sending off a requisition. But a pap requires more time. You actually have to see the patient, educate them on the reasons for the pap, have them remove their clothes, and physically perform the test. Is that too much effort to save a life?

Cervical cancer is a preventable disease!
GET BACK TO SEEING PATIENTS AND DO YOUR JOB... DO A PAP SMEAR!

Dr. Felice Lackman, MD, FRCS (C)
Regional Cervical Screening and Colposcopy Lead

Current/Pandemic Cervical Screening Guideline Reminders

- Please continue to screen patients who are due for a pap test and consider prioritizing people who are under/never screened.
- The OCSF is encouraging the start of cervical screening for patients at age 25.*
- As cervical screening services resume, the OCSF recommends that people with one LSIL or ASCUS result should have repeat cytology at 12 months.

*The age of initiation will formally change to 25 with the implementation of HPV testing as the primary tool for cervical screening.

NEED SUPPORT WITH WHERE TO START?

Access Your Screening Activity Report (SAR)

Don't have access to your SAR?
Email us to register or visit bit.ly/cancerSAR

If you are a PEM physician, using your SAR is an effective way to triage patients for a pap test. The "Action Required" section on the dashboard shows the highest priority patients. The numbered links under each modality will generate a list of patients that are overdue for screening, with an abnormal result requiring follow up, and with invalid results requiring retest. You can also assign a delegate at your practice to access the SAR and contact patients requiring follow up. Contact us for support/resources or for more information at icsregional@southlakeregional.org or 905-895-4521 ext. 6065.

Screening Activity Report (SAR) as of 31-Dec-2021

Dashboard

Physician Level Summary	Breast Screening	Cervical Screening	Colorectal Screening
Total eligible individuals	265	588	397
Total excluded individuals (due to previous cancer, surgery, or OCSF high risk)	13	53	2
Action required	114	201	187
Abnormal screen, follow-up needed	0	6	2
Invalid result, retest required	N/A	0	2
Overdue for screening	114	195	185
Due for screening ≤ 6 months	48	45	20
Physician review required	13	50	146
Colonoscopy in the last 10 years or Flexible Sigmoidoscopy in the last 10 years	N/A	N/A	141
Review patient history	5	45	0
Abnormal screen, follow-up underway or completed	8	5	5
No screening action required: normal screen	90	292	82

Note: Data is reported as of the cut-off date. Recent screening and assessment activities may not be included due to data lag.

CONFIDENTIAL: This report contains personal health information (PHI) about your patient once it is received by you in any format.

MEET OUR NEW TEAM MEMBERS

Dr. Alan Kaplan MD - Regional Primary Care Lead

We are pleased to announce the appointment of Dr. Alan Kaplan as the Regional Primary Care Lead, for the Central Regional Cancer Program. Dr. Kaplan, like his counterparts in the Province, will provide leadership needed to continue to engage and collaborate across the diversity of Primary Care throughout the Central Region. As part of this role, Dr. Kaplan will work collaboratively with the RVP, the Regional Cancer Program team, community hospitals/organizations, primary care and the Provincial Primary Care and Cancer Network to implement OH-CCO's initiatives and the Ontario Cancer Plan initiatives.

Dr. Kaplan did his undergraduate training at the University of Guelph and his Doctor of Medicine from the University of Toronto. He has been a staff member at North York Branson, Mackenzie Health and Brampton Civic Hospitals. Dr. Kaplan currently runs Family Practice clinics in both Thornhill and Aurora and is a member of multiple advisory committees. He is the current chair of the Family Physician Airways Group of Canada and has been certified as an educator in Canada.



Rachel Lamont MPH Coordination Advisor, Health Promotion



Rachel joined the team in August 2021. She has a Masters in Public Health with a Specialization in Health Promotion. Prior to joining the team, Rachel spent time working in research with the Ontario Tobacco Research Unit and at St. Michael's Hospital with the Injury Prevention Research Office.

From there, Rachel began working with Parachute, a charity focused on injury prevention. At Parachute, Rachel worked as a Knowledge Translation & Programs Coordinator, advancing quickly into a management position. Rachel gained experience in project planning, implementation and evaluation of evidence-based health promotion programs, stakeholder engagement and developing public health education and campaigns.

Breanna Bitondo R.Kin Coordination Advisor, Prevention



Breanna joined the team in July 2021. She is currently a Masters of Health Management candidate at McMaster University. As a Registered Kinesiologist, Breanna comes with extensive experience clinically serving patients with a variety of conditions, such as cancer, diabetes, cardiovascular disease and multiple sclerosis.

Her previous roles have provided her with skills in creating patient education resources, evaluating initiatives using evidence to drive practice and creating community partnerships. This work also included program development and evaluation initiatives related to cardiovascular prevention through mitigation of risk factors, which also overlaps with cancer prevention. Breanna is the smoking cessation champion for the central region, and is responsible for overseeing all cancer prevention-related initiatives.

Trans Health Mentorship Call

1st and 3rd Wednesday of the month

To join the call, sign up for an account on LGBT2SQ Health Connect:

learn.rainbowhealthontario.ca/



**RHO 2022 Symposium:
LGBT2SQ Health in Focus**
Virtual gathering | February 25, 2022

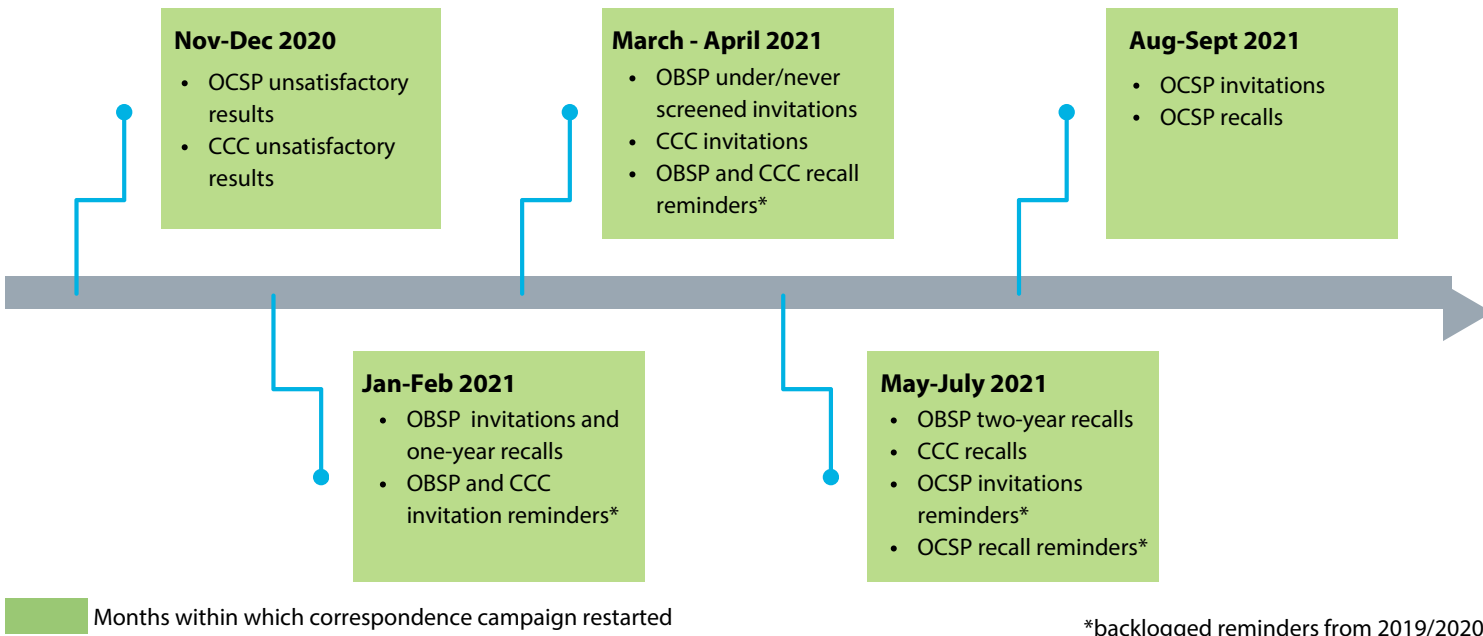


For more information or to register, visit bit.ly/3G5b3Az



CORRESPONDENCE UPDATE

Invitation, Recall, Reminder, and Unsatisfactory Result correspondence letters were paused on March 23, 2020 due to the COVID-19 pandemic. Correspondence was resumed in a measured way in November 2020, with unsatisfactory result, invitation and recall letters prioritized for restart. Invitation and recall letter backlogs have now been cleared (please see chart below), and invitation and recall reminder letters have restarted as of October 2021.



OCSP - CERVICAL SCREENING

FYI - Management of Colposcopy Referrals

To support the management of colposcopy services with the increase in referrals as we recover from the pandemic, please note that depending on capacity, facilities are encouraged to:

- decline inappropriate referrals (such as for patients with first time ASCUS or LSIL unless positive for HPV 16/18)
- triage referrals as per the prioritization framework - bit.ly/3o2jVk8
- prioritize visits for surveillance in colposcopy after treatment by considering risk factors for persistence of disease or recurrence

OBSP - BREAST SCREENING

New OBSP Sites in our Region

We welcomed two new OBSP sites to the region in August! The Central Region now has 33 OBSP sites across our region.



Insight Imaging - REOPENED
18 Wynford Drive
North York
M3C 1W1



CARMIT - RELOCATED
837 Wilson Avenue
North York
M3K 1E4

CCC- COLORECTAL SCREENING

FIT Requisition Rejections Due to OHIP

- Expired health cards (OHIP) continue to be eligible for FIT until February 28, 2022.
- Expired health cards (OHIP) are most often rejected because of a secondary issue outside of expiry with the card that results in the OHIP being cancelled or voided (e.g. due to a lost, stolen, damaged card).
- To avoid rejections due to this issue, please confirm validity of the health card prior to making a FIT referral by validating the Health Insurance Number (HIN) and version code through the MOH OHIP validation tool.

FIT CPD Sessions

Our team is offering two virtual certified CPD sessions, each eligible for 1 credit per hour, for upto 1 hour:



1. FIT: A Non-Invasive Test for Colon Cancer
2. Abnormal FIT Follow-Up and Surveillance

If you and/or your practice is interested or if you have any questions, email us at icsregional@southlakeregional.org

CANCER SCREENING RESOURCES NOW AVAILABLE ONLINE

To help support you and your patients get caught up on cancer screening tests during COVID-19, Ontario Health has developed an online cancer screening awareness toolkit. The toolkit includes:

Provider Toolkit Tab - messages around breast, cervical, and colorectal cancers:

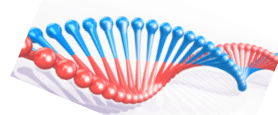
- Key Messages
- Phone Scripts
- Newsletter Content
- Waiting room slides & screensavers
- Social media posts & graphics

Cervical, Breast and Colon Tabs:

- Posters
- Postcards
- Colon cancer fact sheet

All materials are available in English and French, and select materials are available in additional languages, including Indigenous languages.

bit.ly/3E9zQCF

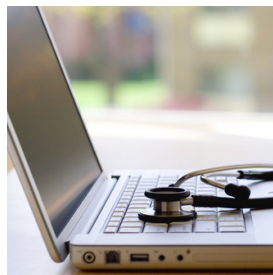


HEREDITARY CANCER RISK TESTING

Ontario Health (Cancer Care Ontario) has newly updated guidance available to facilitate clinically appropriate access to hereditary cancer testing for individuals based on personal and/or family history of cancer: bit.ly/3p9rwN8



NEW PERSON-CENTRED VIRTUAL CANCER CARE GUIDANCE FOR PROVIDERS



Ontario Health (Cancer Care Ontario) has developed clinical guidance for the virtual management of cancer patients to support cancer care providers in their transition to providing and optimizing virtual care, while maintaining the principles of person-centred care. The Person-Centred Virtual Cancer Care Clinical Guidance document is available here: bit.ly/3o7ZfXT



ACCESSIBLE PAP TESTING FOR PATIENTS WITH PHYSICAL DISABILITIES



Primary care providers can refer patients with barriers for a pap test to Vibrant HealthCare Alliance -Anne Johnston Site (Toronto)

- ✓ adjustable table heights
- ✓ full time on site attendant care services
- ✓ ceiling lifts
- ✓ fully accessible and barrier free



2398 Yonge Street,
Toronto, ON M4P 2H4

Phone: 416-486-8666
Fax: 416-486-8660

UPDATES TO ONTARIO CANCER PROFILES: ADDITIONAL INDICATORS AND DATA

Ontario Cancer Profiles is a self-serve, interactive set of dashboards that gives instant access to recent, customizable provincial and regional Ontario cancer statistics on burden, screening and risk factor indicators: bit.ly/3lqbTzN



The Ontario Cancer Profiles dashboards have been updated to include new cancer risk factor indicators, a new cancer prevalence statistic, and additional years of cancer burden and screening data.

New Indicators:

Cancer Risk Factors Dashboard

- Active transportation
- Binge drinking
- Second-hand smoke exposure
- Sedentary behaviour
- Sun safety

Socio-demographic Factors Dashboard

- People age 65 and older

New statistic:

- Cancer prevalence percent

Additional years of data added:

- Cancer incidence, survival and mortality: 2017 & 2018
- Cancer prevalence: 2018
- Cancer screening: 2020



Central Regional Cancer Program
in partnership with Cancer Care Ontario

icsregional@southlakeregional.org
905.895.4521 ext 6065
Fax: 905.952.2461

596 Davis Drive - Mailbox 13
Newmarket, Ontario
L3Y 2P9