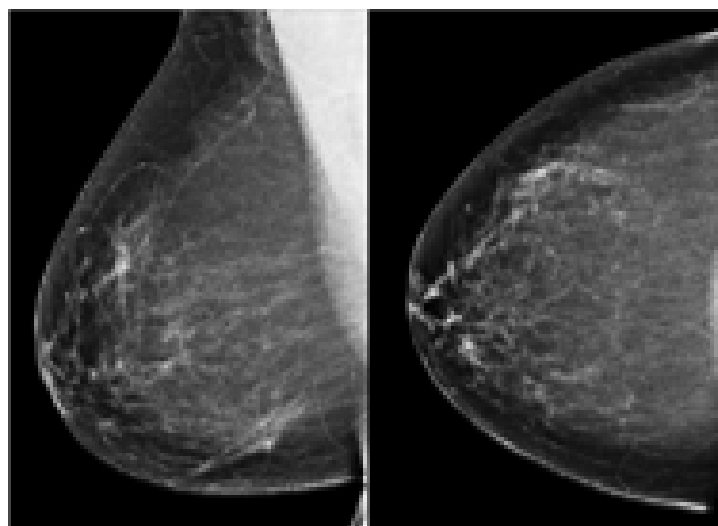


A BI-RADS breast density category is a visually estimated description of the volume of dense breast tissue on the mammogram.

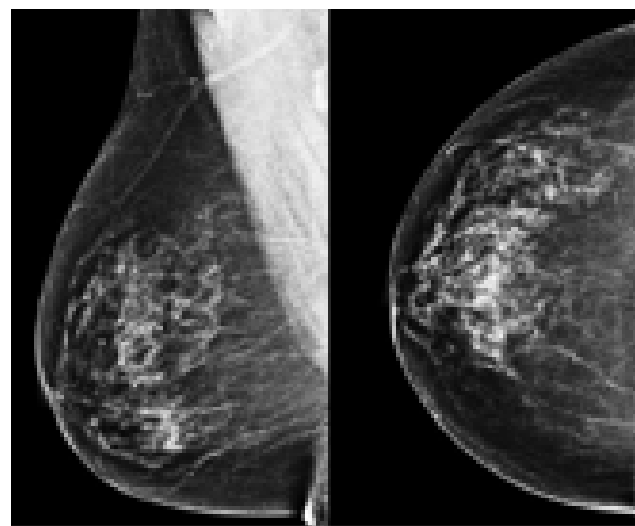
There are four BI-RADS breast density categories. “BI-RADS A” has the least amount of dense tissue and “BI-RADS D” has the most amount of dense tissue:

- o Category A – the breasts are almost entirely fatty
- o Category B – there are scattered areas of fibroglandular density
- o Category C – the breasts are heterogeneously dense, which may obscure small masses
- o Category D – the breasts are extremely dense, which lowers the sensitivity of mammography

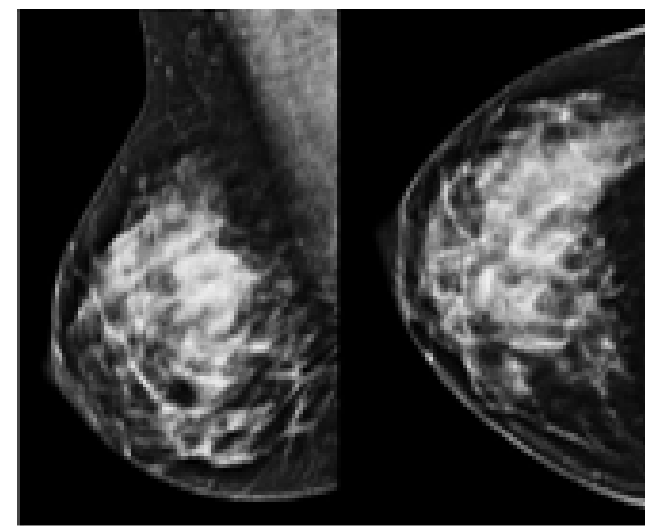
BI-RADS Category A



BI-RADS Category B



BI-RADS Category C



BI-RADS Category D

