

**Central
Regional Cancer Program**

Ontario Health (Cancer Care Ontario)

A Newsletter for Primary Care Providers

January 2023

THE QUARTERLY

Happy New Year from all of us at the Central Regional Cancer Program!

A Year in Review: Cancer Screening Updates

Dr. Alan Kaplan, Regional Primary Care Lead

Ontario Statistics		
Enrolled / Eligible Patient Population:		Ontario
	Breast Screening	1,858,103
	Cervical Screening	3,498,867
	Colorectal Screening	3,694,958
	Ontario Rate:	Percentage Point Change in the Previous 12 Months (Ontario)
PEM Physicians in Ontario (Breast Screening Rate):	62%	11.51
PEM Physicians in Ontario (Cervical Screening Rate):	56%	3.61
PEM Physicians in Ontario (Up-to-Date with Colorectal Tests):	67%	4.76

The end of the year makes us all introspective, and I wanted to take this time to review our progress with cancer screening and to highlight areas of focus for the year 2023. Due to your hard work, as well as the hard work of our technologists and support staff, we have increased our screening volumes, surpassing pre-pandemic numbers and are recovering well from the pandemic, as seen in the figure above. The data report linked below highlights our region's participation rates, showing an improvement in all the three screening programs over the past year.

FIT testing continues to be effective for average-risk colorectal screening. We would like all patients who screen positive to have a colonoscopy within **eight weeks** of their result due to the high risk of the patients actually having colorectal cancer. We reach this target over 80% of the time, which is an accomplishment, but we can still work to improve and ensure follow-up referrals are sent in promptly. Conversely, low-risk colonoscopies yield very few positive tests, so I would urge all of my fellow primary care practitioners to encourage FIT where appropriate.

Mammography capacity has been an issue province-wide due to human resources challenges but we are gradually increasing breast screening volumes. Abnormal findings are receiving expedited referrals for biopsies, much like prior to the pandemic.

Throughout the pandemic, cervical screening was the most impacted, but the metrics are showing

that, across the region, primary care providers have been making patients who are overdue for cervical screening a priority. Much of our care pivoted to virtual, but in person care to allow procedures like pap tests is increasing again. As you may be aware, the Ontario Cervical Screening Program (OCSPP) is working on transitioning to HPV testing. We are currently finalizing an algorithm to clearly establish how primary care should follow and screen patients, and finalizing the referral guidance. Stay tuned for updates related to HPV implementation. Please continue to offer HPV vaccination which is important for the prevention of cervical cancer.

Finally, lung cancer screening has moved through the pilot phase, which was a resounding success. Ontario Health-Cancer Care Ontario (OH-CCO) is reviewing new possible screening sites. The National Lung Cancer Screening trial showed who initially indicated patients were (current or former smokers ages 55-74 with a smoking history of at least 30 pack-years without signs, symptoms, or history of lung cancer) with further clinical criteria being used to clarify those who actually get screened. Note that all patients referred for screening are offered smoking cessation services, even if they do not meet screening criteria.

In conclusion, please know that your hard work and dedication is recognized and appreciated! Keep up the good work as OH-CCO investigates new ways (such as HPV testing) to make us even more efficient over time.

Happy New Year!!

Cervical Screening - Frequently Asked Question:

If annual pap tests are recommended post-discharge from colposcopy, when can patients resume triennial screening?

If HPV testing is available, patients can resume triennial screening when they become HPV negative. Those individuals who test positive for HPV should be screened annually. In the absence of HPV testing, the patient can resume screening every three years when the patient has three consecutive normal yearly pap tests.

Have a question related to cancer screening and follow-up care? Send in your question to our Regional Leads: email icsregional@southlake.ca

Ask a Question

Program Updates

Quick Links - Screening Recommendations

OBSP:

- [Breast Screening Guidelines Summary](#)
- [Breast Density Information](#)



Central Region Cancer Screening Programs Data Update

To view the most recently available data (as of Nov 15 2022) on the breast, cervical, and colorectal screening programs participation rates in the Central Region, [click here](#).

Highlights:

- OBSP participation rate (55.4%) in Q2 has increased by 1.7% compared to Q1 in FY 22/23
- OCSP participation rate (52%) in Q2 has increased by 0.1% compared to Q1 in FY 22/23
- CCC overdue for screening rate **has decreased by 1.1%** in Q2 compared to Q1 in FY 22/23

If you have any questions or feedback related to the data, please [contact us](#) at icsregional@southlake.ca.

CCC:

- [Guide to Average-Risk Screening with FIT](#)
- [Post-Polypectomy Surveillance Recommendations](#)

OCSP:

- [Cervical Screening Guidelines Summary](#)

To request hard copies of any of these guidelines to be mailed to your practice, please [contact us](#) at icsregional@southlake.ca.

July 1, 2023: Referrals Required for OBSP Participants Age 75

Due to continuing capacity challenges that some sites may face in booking screening appointments, the temporary policy suspension is being extended until **June 30, 2023** for OBSP participants who have turned 75. Participants must be age 75 at the time of their screening appointment (i.e. have not turned 76). They must meet all other OBSP eligibility criteria. The temporary policy change is also applicable to participants in the High Risk OBSP.

Beginning **July 1, 2023**, the temporary policy suspension will end, meaning if a participant over age 74 chooses to get screened for breast cancer through the OBSP, they will need a referral from their primary care provider.



Ontario Cancer Statistics 2022 Report

The Surveillance Program at Ontario Health-Cancer Care Ontario is excited to announce the release of the Ontario Cancer Statistics 2022 Report.

This is the fourth in a series of reports that provide information on the burden of cancer in Ontario. It is organized around four main indicators: incidence, mortality, survival and prevalence. This edition includes data from 1984 to 2018 and projections for 2019 to 2034.

View the
Report

New Release of Breast Cancer Patient Information Sheet

The OBSP is pleased to announce the release of a new breast cancer patient information sheet. This is a resource for primary care providers to share with patients to increase their awareness of breast cancer and screening. This information sheet and other public education materials are available in the [Cancer Screening Regional Resources Hub](#).

Download Breast Cancer Patient Information
Sheet

Cancer Screening Resources

How to Get Caught Up on Patients who are Overdue for Screening:

- 1) Use your [Screening Activity Report](#) and/or EMR to identify patients who are due for screening and require follow up
[OSCAR EMR Cancer Screening Guidelines](#)
[Telus PS Suite EMR User Guide](#)
[P&P CIS Preventive Care Guide](#)
[Accuro Guide for Cancer Screening](#)
- 2) Request a custom screening summary for your physician group/ practice or an individual summary - email icsregional@southlake.ca
- 3) Promote awareness and importance of cancer screening to patients in your office using resources available [here](#):
bit.ly/3jjekpK
- 4) Complete OCFP cancer screening audits:
[MainPro Audit - Breast](#) (3 credits)
[MainPro Audit - Cervical](#) (3 credits)
[MainPro Audit - Colorectal](#) (3 credits)



OntarioMD i4C Program

OntarioMD's (OMD) Insights4Care Program saves time and resources in managing a busy practice by offering clinicians tools and direct support that can be used to make practice improvement and unlock the value of your EMR data for better patient outcomes.

The Program offers:

- **i4C Dashboard:** An EMR-integrated, user-friendly and actionable population health tool.

*available on some EMRs

- **i4C Advisory Service:** Hands-on clinician advisory support from OMD's team of quality improvement and EMR experts.

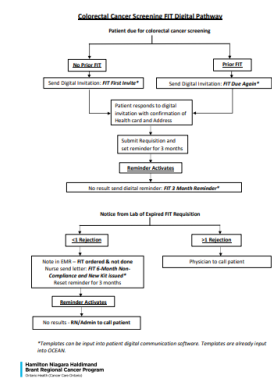
For more information, visit ontariomd.ca or email support@ontariomd.com.

Learn More

FIT Requisitions: Digital Pathway & Patient Communication Templates

Are you finding that many of your FIT requisitions are being rejected or expiring after six months?

Dr. Meghan Davis, Primary Care Lead - Hamilton Niagara Haldimant Brant Regional Cancer Program has created a resource to help address expired and rejected FIT requisitions. This can be accessed at: <https://bit.ly/3V78dCd>



Download Resource

[Access your SAR](#)

[Enrol for your SAR](#)

[Enrol for PLC](#)

Central Regional Cancer Program
Ontario Health (Cancer Care Ontario)

596 Davis Drive
Newmarket, Ontario L3Y 2P9
905-895-4521 ext. 6065

Learn More About Us

Contact Us

Central Regional Cancer Program | 596 Davis Drive, Newmarket, L3Y 2P9 Canada

[Unsubscribe icsregional@southlake.ca](mailto:unsubscribe@icsregional@southlake.ca)
[Update Profile](#) | [Constant Contact Data Notice](#)

Sent by icsregional@southlake.ca powered by



Try email marketing for free today!